

# R.M. COCHRAN COMPANY, INC.

**Newsletter - January 2013**



# RECENT PROJECT

## Hallkeen Management

15 - 25 HEMENWAY STREET, BOSTON, MA

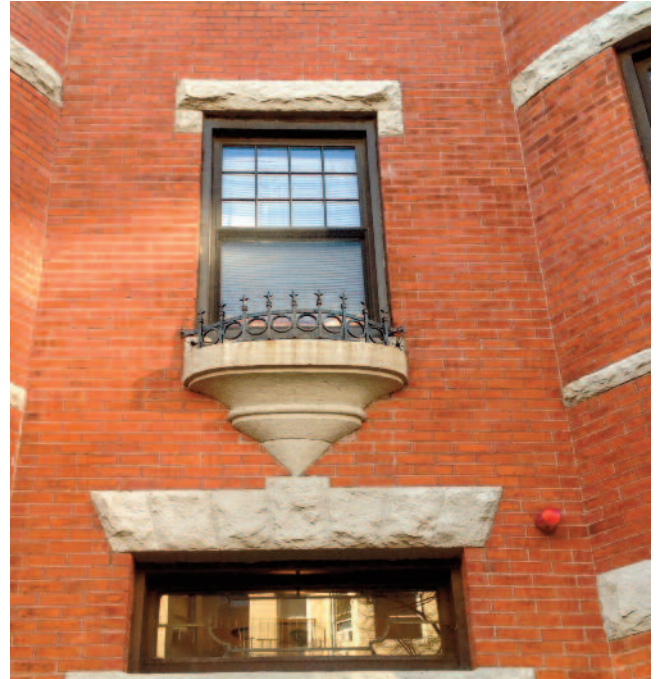
### Project Description

Apply new construction grade sealants at (66) exterior windows at front of building.

Using low temperature sealants, we were able to get the job completed before the bitter cold arrived.



## After Construction



## During Construction



# WATCH OUT FOR ICE DAMS

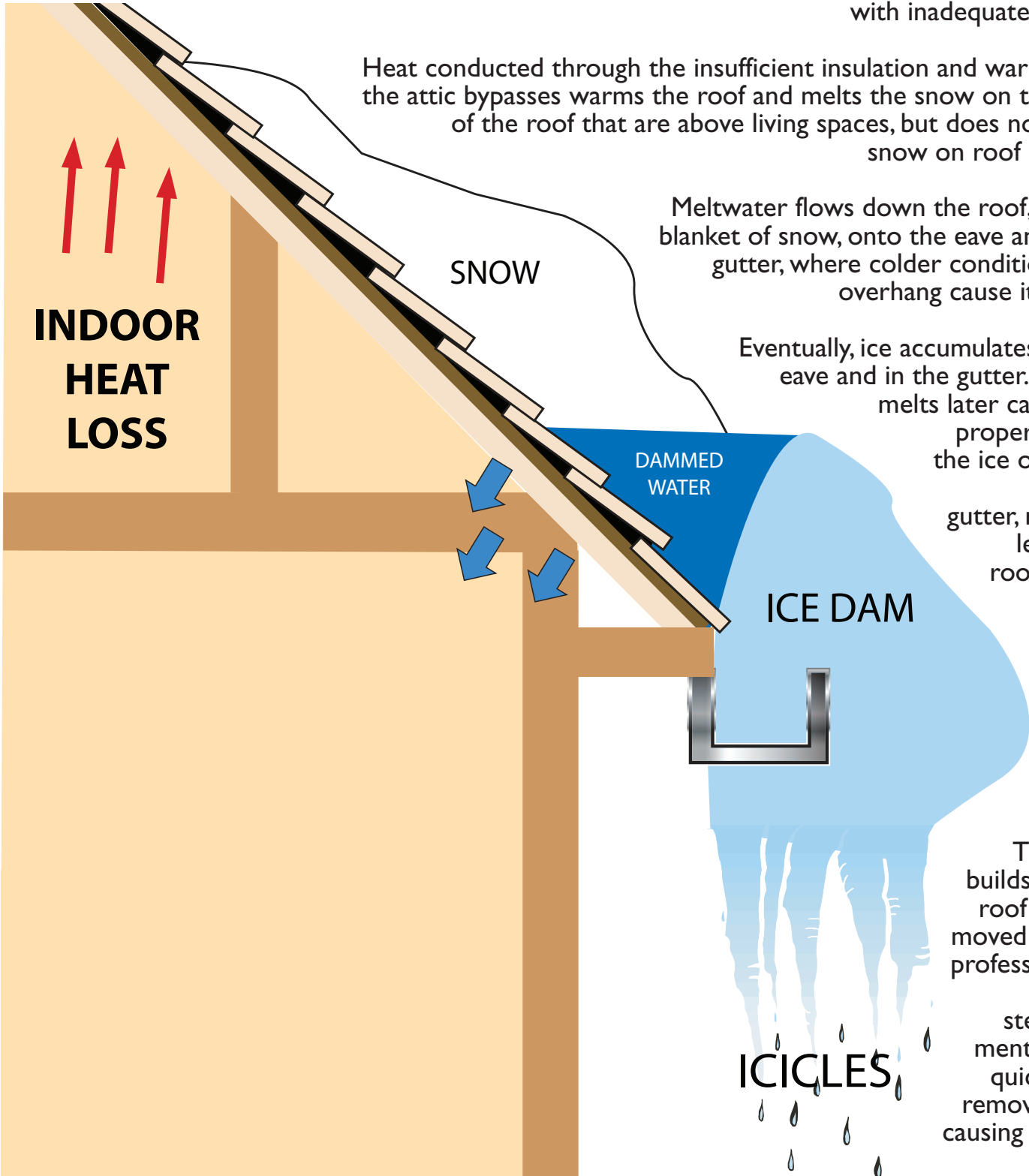
An ice dam, on a smaller scale, is a problem of house and building maintenance in cold climates. An ice dam can occur when snow accumulates on the slanted roof of a house with inadequate insulation.

Heat conducted through the insufficient insulation and warm air from the attic bypasses warms the roof and melts the snow on those areas of the roof that are above living spaces, but does not melt the snow on roof overhangs.

Meltwater flows down the roof, under the blanket of snow, onto the eave and into the gutter, where colder conditions on the overhang cause it to freeze.

Eventually, ice accumulates along the eave and in the gutter. Snow that melts later cannot drain properly through the ice on the eave and in the gutter, resulting in leaks to the roof space resulting in damaged ceilings, walls, roof structure and insulation.

The ice that builds up on the roof can be removed by trained professionals that use special steam equipment to ensure quick and safe removal without causing damage to the roof.



# About RM Cochran Company

**R.M. Cochran Company** is a full service commercial contractor & property services firm serving the needs of **Commercial and Residential property management firms** throughout New England for more than a decade. This experience has given us an appreciation of the competing demands, deadlines and budget restrictions that you face.

**R.M. Cochran Company** is staffed with licensed and knowledgeable personnel that will be responsive to what you need. *We pride ourselves in maintaining critical industry certifications like Lead-Safe.* Our sole focus is assisting property managers in an efficient & affordable manner. With our comprehensive range of services, one convenient call gets the job done at a competitive price.

**R.M. Cochran Company** has earned its **reputation solely based on CUSTOMER SATISFACTION** through our quality workmanship, attention to detail and prompt service to our client base. As hundreds of our clients will tell you, we come highly recommended.



RM Cochran Company Inc. 10 Draper Street #33 Woburn MA 01801

## SERVICES & CERTIFICATIONS

### Build Out/ Interiors

Framing, sheetrock, plaster, paint, flooring (carpet, VCT, hardwood) acoustical ceiling and MEPs

### Masonry Restoration

Brick/Block repair or replacement, concrete patching, masonry pointing, epoxy injection and restoration cleaning.

### Waterproofing

Controlled water testing and leak troubleshooting, roof leak repair, caulking repair or replacement (window sealants/control jointing), masonry clear coating and concrete deck coatings.

### Concrete/Steel

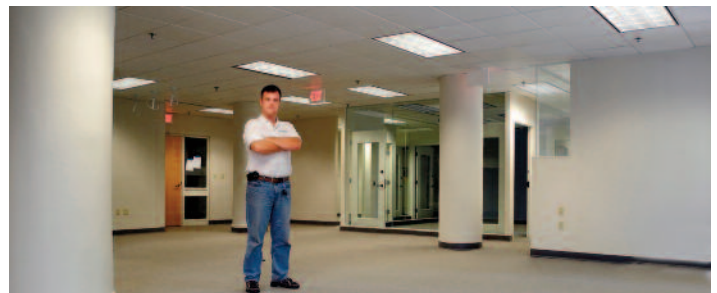
Sidewalks, steps, walkways, ramps and railings (including ADA, interior/ exterior)

### Glass Replacement

Installations & replacement of insulated, plate & storefront glass

### Carpentry

Kitchens (ADA), doors (interior/ exterior: wood, steel & fire) and windows (new construction & replacement)



### Reasonable Accommodations & Worker Safety

Making facilities accessible for



the disabled (ADA grab bars & ramps), and the removal of physical barriers for the disabled. Fall Protection for your employees and vendors.

### Lead Safe Certification

EPA requires individuals conducting lead-based paint activities (abatement, inspection, and risk assessment) in target housing and child-occupied facilities to be trained and certified. Our staff is



accredited to ensure quality, and certified individuals must follow specific work practices ensuring that lead hazards are addressed.