

# R.M. COCHRAN COMPANY, INC.

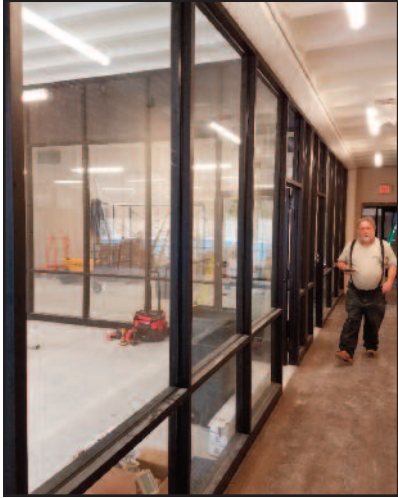
**Newsletter - February 2018**



## ***Braintree Village - More Interior Storefront***

As part of the larger Braintree Village renovation project, the former indoor pool area is being converted into a fitness room and a dance/yoga room. Once the glass panels are installed, the bronze aluminum frames will provide

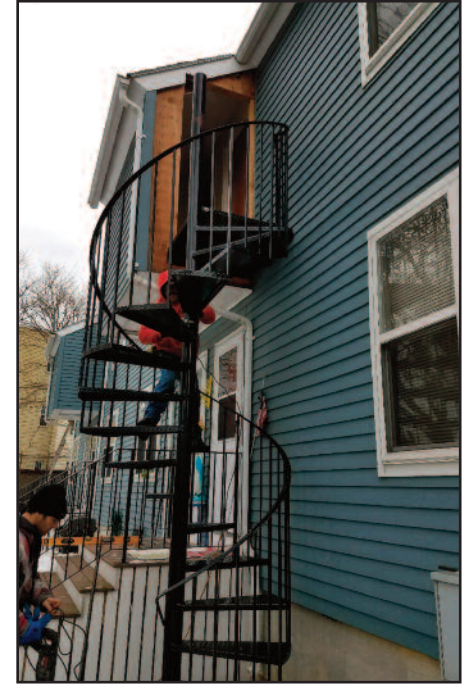
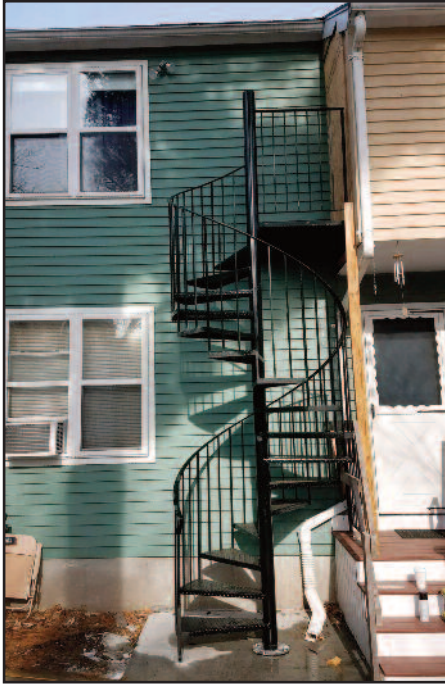
lots of natural light for these workout areas. The final steps were completed as the truck load of glass was installed



## ***Harwell Homes - Peabody Properties***

For this project at Harwell Homes, we teamed up with Somerville Ornamental to create additional egresses at four units in this community. A big part of this project is

the fabrication of four exterior spiral staircases and four new doors. We expect the doors to be installed soon and the project to be complete.



## ***Melville Towers - Peabody Properties***

The parking deck at Melville Towers needed custom aluminum pans to divert excess water away from highly traf-

ficked areas. This was a critical operation since the draining water could freeze over during low temps.



# About RM Cochran Company

**R.M. Cochran Company** is a full service commercial contractor & property services firm serving the needs of **Commercial and Residential property management firms** throughout New England for more than a decade. This experience has given us an appreciation of the competing demands, deadlines and budget restrictions that you face.

**R.M. Cochran Company** is staffed with licensed and knowledgeable personnel that will be responsive to what you need. *We pride ourselves in maintaining critical industry certifications like Lead-Safe.* Our sole focus is assisting property managers in an efficient & affordable manner. With our comprehensive range of services, one convenient call gets the job done at a competitive price.

**R.M. Cochran Company** has earned its **reputation solely based on CUSTOMER SATISFACTION** through our quality workmanship, attention to detail and prompt service to our client base. As hundreds of our clients will tell you, we come highly recommended.



RM Cochran Company Inc. 10 Draper Street #33 Woburn MA 01801

## SERVICES & CERTIFICATIONS

### Build Out/ Interiors

Framing, sheetrock, plaster, paint, flooring (carpet, VCT, hardwood) acoustical ceiling and MEPs

### Masonry Restoration

Brick/Block repair or replacement, concrete patching, masonry pointing, epoxy injection and restoration cleaning.

### Waterproofing

Controlled water testing and leak troubleshooting, roof leak repair, caulking repair or replacement (window sealants/control jointing), masonry clear coating and concrete deck coatings.

### Concrete/Steel

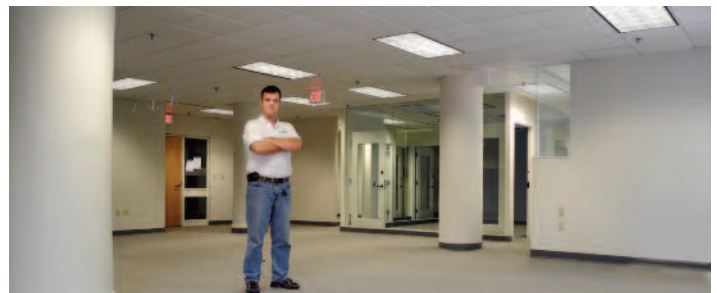
Sidewalks, steps, walkways, ramps and railings (including ADA, interior/ exterior)

### Glass Replacement

Installations & replacement of insulated, plate & storefront glass

### Carpentry

Kitchens (ADA), doors (interior/ exterior: wood, steel & fire) and windows (new construction & replacement)



### Reasonable Accommodations & Worker Safety

Making facilities accessible for



the disabled (ADA grab bars & ramps), and the removal of physical barriers for the disabled. Fall Protection for your employees and vendors.

### Lead Safe Certification

EPA requires individuals conducting lead-based paint activities (abatement, inspection, and risk assessment) in target housing and child-occupied facilities to be trained and certified. Our staff is



accredited to ensure quality, and certified individuals must follow specific work practices ensuring that lead hazards are addressed.