

# R.M. COCHRAN COMPANY, INC.

Newsletter - July 2018

## MELVILLE TOWERS



## MELVILLE TOWERS - NEW BEDFORD, MA

RM Cochran was hired to install concrete deck sealants at exterior plaza front and rear of building.

This project required us to remove existing failed sealants, power wash all jointing between concrete pads,

decontaminate all jointing using chemical cleanser, install closed cell non-gassing backer rod, mask off jointing to accommodate new sealant, install sealants at all concrete pad jointing and repair or replace failed concrete pads at exterior plaza storm drains.



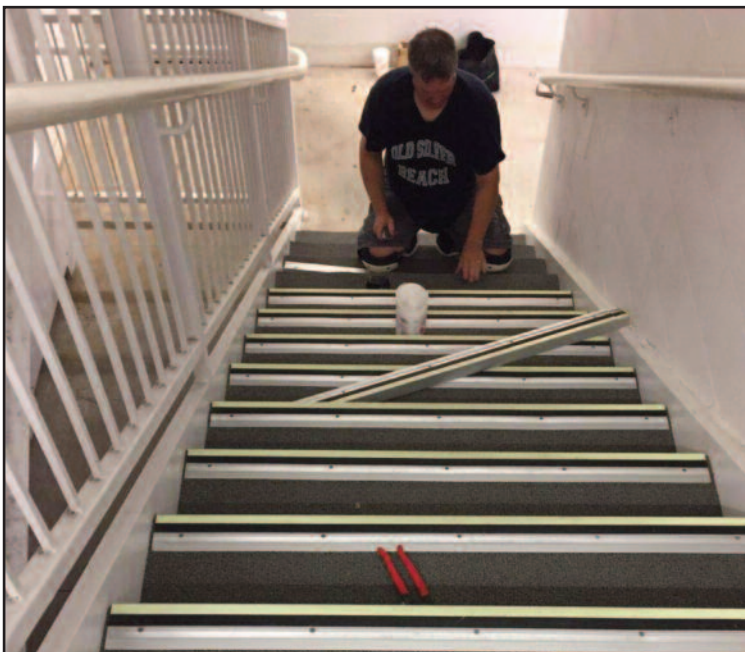
## NEW BALANCE GUEST STREET CAULKING

New Balance contracted with RM Cochran to remove and replace all the sealants between the sidewalk and the building at 100 Guest Street.



## NEW BALANCE GUEST STREET CARPETING

The common area carpeting at one of the stairwells leading from the parking area needed to be replaced. We performed the work during off hours in order to avoid disrupting the work day flow of employee foot traffic.



# About RM Cochran Company

**R.M. Cochran Company** is a full service commercial contractor & property services firm serving the needs of **Commercial and Residential property management firms** throughout New England for more than a decade. This experience has given us an appreciation of the competing demands, deadlines and budget restrictions that you face.

**R.M. Cochran Company** is staffed with licensed and knowledgeable personnel that will be responsive to what you need. *We pride ourselves in maintaining critical industry certifications like Lead-Safe.* Our sole focus is assisting property managers in an efficient & affordable manner. With our comprehensive range of services, one convenient call gets the job done at a competitive price.

**R.M. Cochran Company** has earned its **reputation solely based on CUSTOMER SATISFACTION** through our quality workmanship, attention to detail and prompt service to our client base. As hundreds of our clients will tell you, we come highly recommended.



---

RM Cochran Company Inc.    10 Draper Street #33    Woburn    MA    01801

---

## SERVICES & CERTIFICATIONS

### Build Out/ Interiors

Framing, sheetrock, plaster, paint, flooring (carpet, VCT, hardwood) acoustical ceiling and MEPs

### Masonry Restoration

Brick/Block repair or replacement, concrete patching, masonry pointing, epoxy injection and restoration cleaning.

### Waterproofing

Controlled water testing and leak troubleshooting, roof leak repair, caulking repair or replacement (window sealants/control jointing), masonry clear coating and concrete deck coatings.

### Concrete/Steel

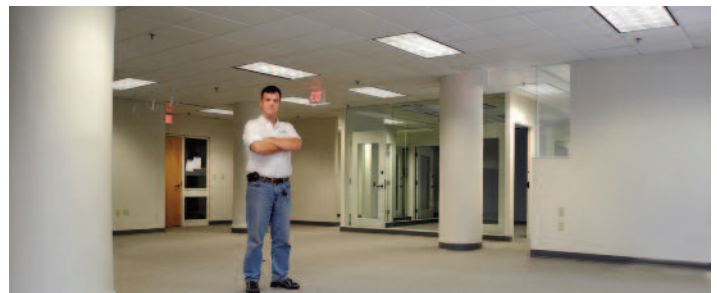
Sidewalks, steps, walkways, ramps and railings (including ADA, interior/ exterior)

### Glass Replacement

Installations & replacement of insulated, plate & storefront glass

### Carpentry

Kitchens (ADA), doors (interior/ exterior: wood, steel & fire) and windows (new construction & replacement)



### Reasonable Accommodations & Worker Safety

Making facilities accessible for



the disabled (ADA grab bars & ramps), and the removal of physical barriers for the disabled. Fall Protection for your employees and vendors.

### Lead Safe Certification

EPA requires individuals conducting lead-based paint activities (abatement, inspection, and risk assessment) in target housing and child-occupied facilities to be trained and certified. Our staff is



accredited to ensure quality, and certified individuals must follow specific work practices ensuring that lead hazards are addressed.