

# R.M. COCHRAN COMPANY, INC.

**Newsletter - March 2018**

**The Final Phase is  
Underway at New Balance**



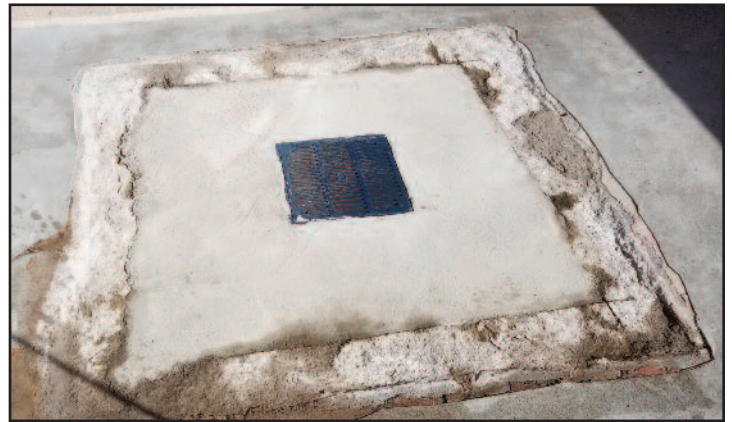
## *New Balance Athletic Shoes, Inc*

We have entered the final stage of our multi-year masonry restoration at the New Balance landmark building in Lawrence, MA.



## *Springfield: Pynchon / Edgewater Apartments*

We were called out to this Western Massachusetts complex to prevent water infiltration at multiple decks in this 612 unit community.



Part of the solution included installing new Zurn drains into the decks and cementing and sealing other cracks.

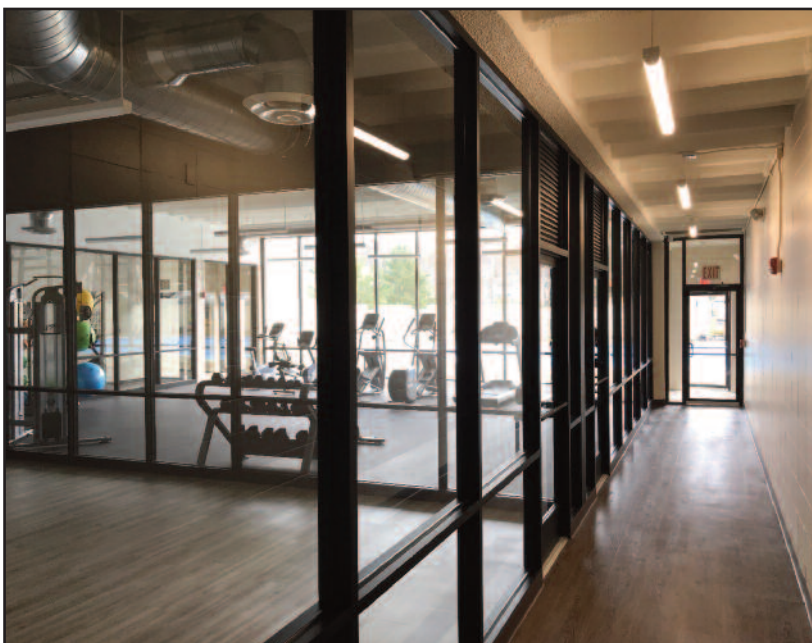


The final phase will be applying a pedestrian deck coating to the decks.



## ***Braintree Village Nearing Completion***

We are getting very close to the completion of the renovations at the Braintree Village community room. Final steps include receipt and installation of the mailboxes and the construction cleaning.



# About RM Cochran Company

**R.M. Cochran Company** is a full service commercial contractor & property services firm serving the needs of **Commercial and Residential property management firms** throughout New England for more than a decade. This experience has given us an appreciation of the competing demands, deadlines and budget restrictions that you face.

**R.M. Cochran Company** is staffed with licensed and knowledgeable personnel that will be responsive to what you need. *We pride ourselves in maintaining critical industry certifications like Lead-Safe.* Our sole focus is assisting property managers in an efficient & affordable manner. With our comprehensive range of services, one convenient call gets the job done at a competitive price.

**R.M. Cochran Company** has earned its **reputation solely based on CUSTOMER SATISFACTION** through our quality workmanship, attention to detail and prompt service to our client base. As hundreds of our clients will tell you, we come highly recommended.



RM Cochran Company Inc. 10 Draper Street #33 Woburn MA 01801

## SERVICES & CERTIFICATIONS

### Build Out/ Interiors

Framing, sheetrock, plaster, paint, flooring (carpet, VCT, hardwood) acoustical ceiling and MEPs

### Masonry Restoration

Brick/Block repair or replacement, concrete patching, masonry pointing, epoxy injection and restoration cleaning.

### Waterproofing

Controlled water testing and leak troubleshooting, roof leak repair, caulking repair or replacement (window sealants/control jointing), masonry clear coating and concrete deck coatings.

### Concrete/Steel

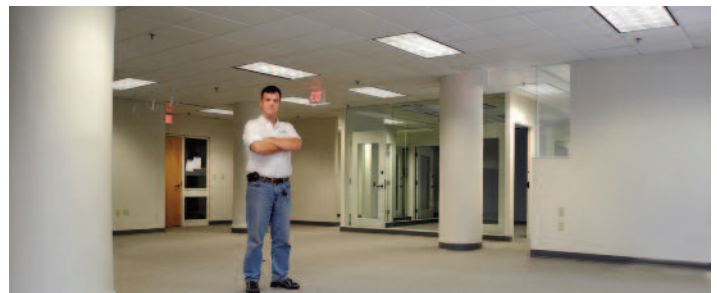
Sidewalks, steps, walkways, ramps and railings (including ADA, interior/ exterior)

### Glass Replacement

Installations & replacement of insulated, plate & storefront glass

### Carpentry

Kitchens (ADA), doors (interior/ exterior: wood, steel & fire) and windows (new construction & replacement)



### Reasonable Accommodations & Worker Safety

Making facilities accessible for



the disabled (ADA grab bars & ramps), and the removal of physical barriers for the disabled. Fall Protection for your employees and vendors.

### Lead Safe Certification

EPA requires individuals conducting lead-based paint activities (abatement, inspection, and risk assessment) in target housing and child-occupied facilities to be trained and certified. Our staff is



accredited to ensure quality, and certified individuals must follow specific work practices ensuring that lead hazards are addressed.