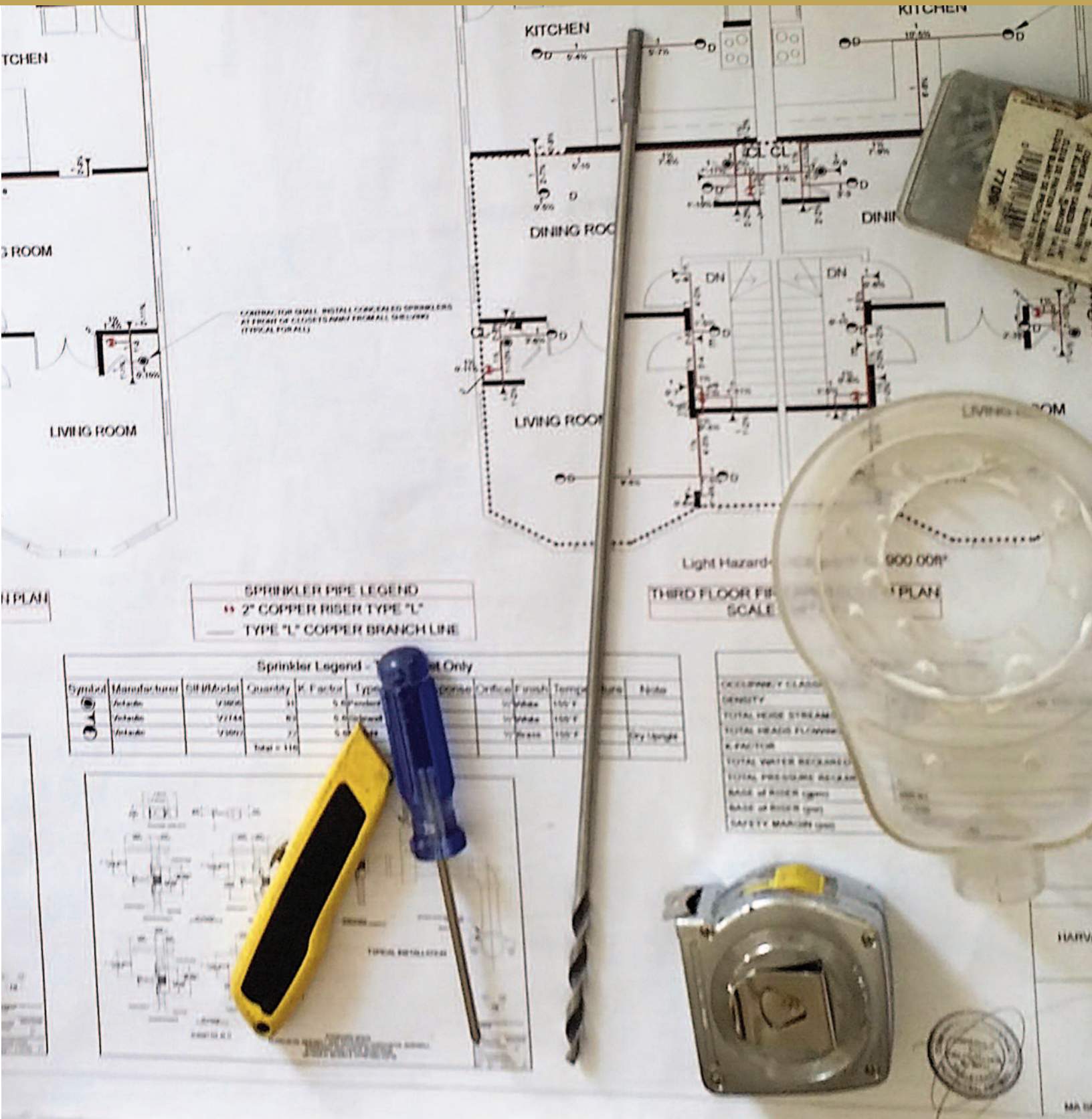


R.M. COCHRAN COMPANY, INC.

Newsletter - October 2014



CONTRACTOR SHALL INSTALL GARAGE FIRE SPRINKLERS AT FRONT OF CLOSET FROM ALL GARAGES (TYPICAL FOR ALL)

SPRINKLER PIPE LEGEND
 ● 2" COPPER RISER TYPE "L"
 — TYPE "L" COPPER BRANCH LINE

Sprinkler Legend - Detail Only

Symbol	Manufacturer	SIF Model	Quantity	K Factor	Type	Response	Orifice	Finish	Temp	Size	Spoke
●	Autocast	V1000	31	5	Standard	FR	1/2" Brass	100°F			
●	Autocast	V1144	83	5	Standard	FR	1/2" Brass	100°F			
●	Autocast	V1007	7	5	Standard	FR	1/2" Brass	100°F			Qty. In Sight
			Total = 116								

Light Hazard - 900,000*

THIRD FLOOR FIRE PLAN

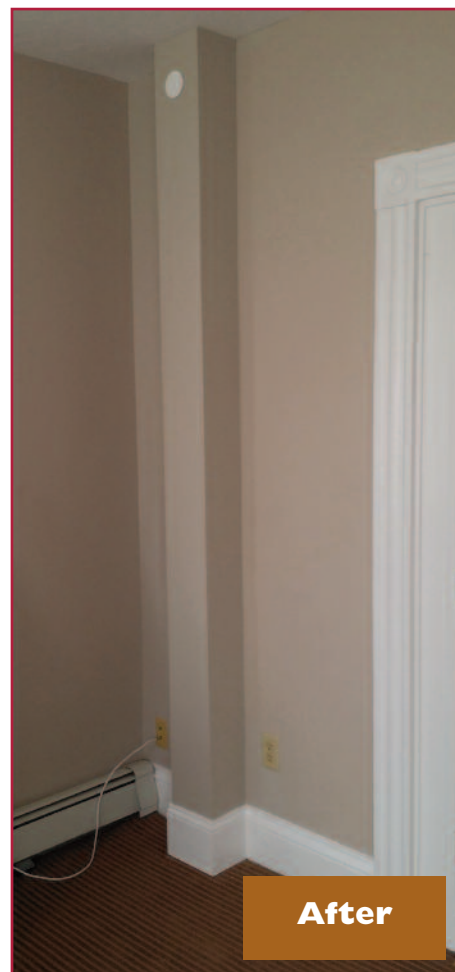
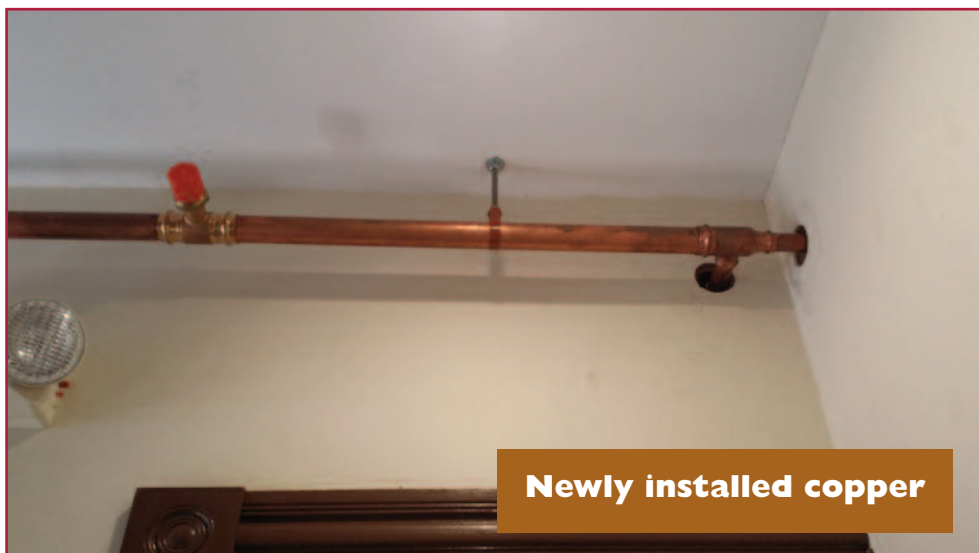
SCALE

Category	Value
CLOSURE CLASS	
DENSITY	
TOTAL HEAT STREAM	
TOTAL MASS FLOW	
K FACTOR	
TOTAL WATER REQUIRED	
TOTAL PRESSURE RELIEF	
BASE OF RISER (mm)	
BASE OF RISER (in)	
SAFETY MARGIN (mm)	



Project: 277 - 279 Western Ave Client: Harvard Real Estate

Provide carpentry support for a complete sprinkler system installation. Scope included cutting holes for copper pipes, building soffits to hide sprinkler lines, and construction clean on demand to keep the area clean for residents.



Project: 132 Mt Auburn St. Client: Harvard Real Estate



Before

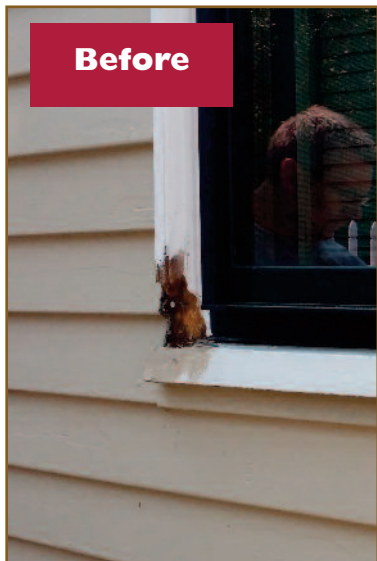
Provide carpentry repairs to exterior of 132 Mt Auburn Street in Cambridge, MA where rotted wood exists. Areas of focus where window sills and door frames



Before



After



Before



After

About RM Cochran Company

R.M. Cochran Company is a full service commercial contractor & property services firm serving the needs of **Commercial and Residential property management firms** throughout New England for more than a decade. This experience has given us an appreciation of the competing demands, deadlines and budget restrictions that you face.

R.M. Cochran Company is staffed with licensed and knowledgeable personnel that will be responsive to what you need. *We pride ourselves in maintaining critical industry certifications like Lead-Safe.* Our sole focus is assisting property managers in an efficient & affordable manner. With our comprehensive range of services, one convenient call gets the job done at a competitive price.

R.M. Cochran Company has earned its **reputation solely based on CUSTOMER SATISFACTION** through our quality workmanship, attention to detail and prompt service to our client base. As hundreds of our clients will tell you, we come highly recommended.



RM Cochran Company Inc. 10 Draper Street #33 Woburn MA 01801

SERVICES & CERTIFICATIONS

Build Out/ Interiors

Framing, sheetrock, plaster, paint, flooring (carpet, VCT, hardwood) acoustical ceiling and MEPs

Masonry Restoration

Brick/Block repair or replacement, concrete patching, masonry pointing, epoxy injection and restoration cleaning.

Waterproofing

Controlled water testing and leak troubleshooting, roof leak repair, caulking repair or replacement (window sealants/control jointing), masonry clear coating and concrete deck coatings.

Concrete/Steel

Sidewalks, steps, walkways, ramps and railings (including ADA, interior/ exterior)

Glass Replacement

Installations & replacement of insulated, plate & storefront glass

Carpentry

Kitchens (ADA), doors (interior/ exterior: wood, steel & fire) and windows (new construction & replacement)



Reasonable Accommodations & Worker Safety

Making facilities accessible for



the disabled (ADA grab bars & ramps), and the removal of physical barriers for the disabled. Fall Protection for your employees and vendors.

Lead Safe Certification

EPA requires individuals conducting lead-based paint activities (abatement, inspection, and risk assessment) in target housing and child-occupied facilities to be trained and certified. Our staff is



accredited to ensure quality, and certified individuals must follow specific work practices ensuring that lead hazards are addressed.